

## The 22nd Japanese Sake Tourney

**Theme: H#2 with Invisible Pieces. No other fairy conditions or pieces are allowed.**

This tourney is dedicated to the memory of the great Invisible lover, René J. Millour.

Judge: Tadashi Wakashima

Deadline: 09/07/2025 (Wed.) P.M. 12:00

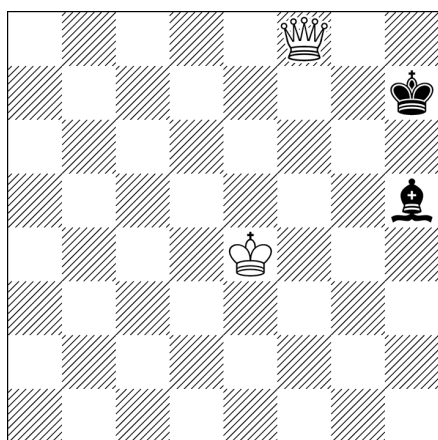
Only congress participants can receive bottles.

Send to Tadashi Wakashima by e-mail ([wakashimatadashi@gmail.com](mailto:wakashimatadashi@gmail.com))

### Definition

Invisible Piece (Pawn, Knight ...): Invisible whose color and type are given. When its location is revealed, it becomes an ordinary piece. For further details, see <https://juliasfairies.com/problems/no-1572/>. Invisible Pawn, Knight ... are denoted as IP, IS and so on.

### Examples

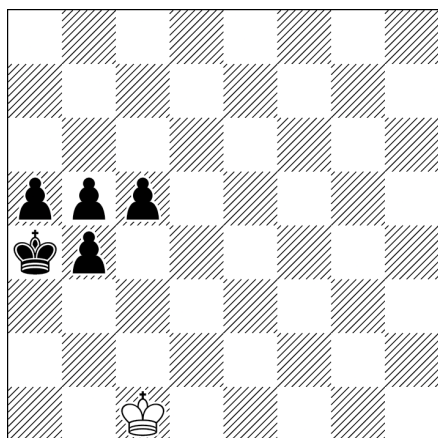


H#1 2 solutions

Invisible Piece: wIS

1.Kh8 (ISg8) Sf6#

1.Bg6 Qg7#(ISf5)



Tadashi Wakashima

Original

H#2 b) Pa5→a6

Invisible Pieces: wRB

a) 1.c4 Kb2 2.cxb3 (IRb3 because IBb3 is illegal)  
Ixb3 (=B)#

b) 1.b3 I--- 2.cxb4 (IBb4 because IRb4 is illegal)  
Ixa6 (=R)#

Invisible Zilahi.